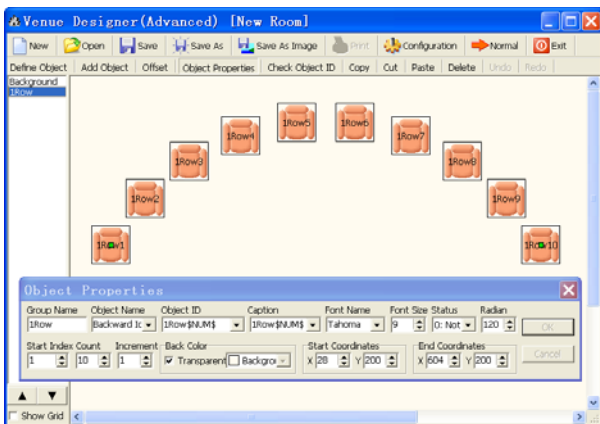


HCS-4212/50W Professional Venue Design Module



Venue design (professional)

- Powerful "object properties" function: object attribute can be set and changed, including:
 - ◆ Set group name and object name
 - ◆ Set unique ID and ID display mode for every object, supporting different fonts and sizes
 - ◆ Set starting object status
 - ◆ Set a radian for the object group and design seat layout according to true seating positions
 - ◆ Set start index of the object group
 - ◆ Change the amount of the units in an object group
 - ◆ Set numbering increment
 - ◆ Set initial background color and whether transparent or not
 - ◆ Set start and end coordinates of object group
- Object ID check facilities
- Support object copy, cut, paste and delete operation
- Object arrangement can be changed

Functions

In distinction from the normal edition of the Venue Design Module, the professional version has additional powerful functions to design manifold layouts of venues. The main difference is the availability of functional buttons for file operation (toolbar buttons) and object operation (buttons below toolbar buttons) in the toolbars. In addition, the functions are also available in the file right-click pop-up menu. Moreover, the Object Properties dialog box is floating on the window for fast changing the properties of current object.

- File operation:
 - ◆ Venue design supports file operation, including: new, open, save as, and print
 - ◆ Create a new conference file: set the background color, room size and other parameters, including:
 - Background
 - Line number
 - Amount per line
 - Seat icon
 - Seat direction
 - Transparent icon or not
 - Show as MIC. icon or not
 - Re-arrange seat position or not
 - ◆ The parameters above can be changed at any time through "Configuration" menu on the toolbar
 - ◆ Add seat/microphone icons line by line, 8 seats/ microphones per line as default value. The amount of seats/microphones per line can be modified. While the normal edition can add only one seat at one go, the professional venue design module can add groups with more than one seat/microphone per group
 - ◆ Shifting facility for complete layout
- Define object:
 - ◆ Picture library with default (customized and/or recurrent) objects
 - ◆ Modifiable object information, e.g. object name, image path, distinguishable colors for displaying object images in different states (e.g. signed-in etc.)

Ordering Information

HCS-4212/50W.....Professional Venue Design Software
Module (for Wireless Voting)