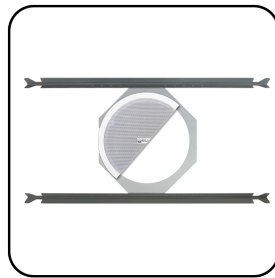
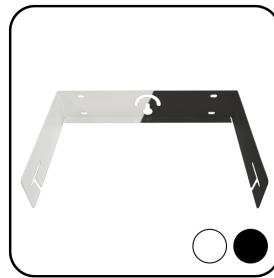


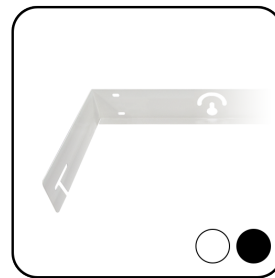
IC-TB6



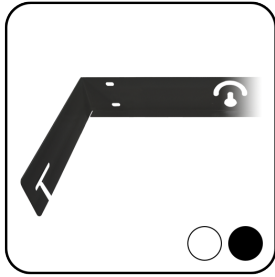
IC-TB8



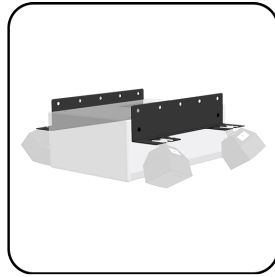
ARQ108UB



ARQ110UB



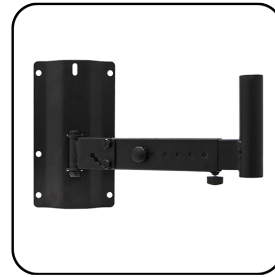
ARQ112UB



ARQSB10SATB



SR8



SR12



TRIP01



POLE01



ADP

IC-TB6 is a tile bridge compatible with IC6 in-ceiling loudspeakers.

IC-TB8 is a tile bridge compatible with IC8 and IC6CLASS series in-ceiling loudspeakers.

ARQ108UB is a U-bracket wall-mount kit compatible with ARQIS108. Available in white and black finish.

ARQ110UB is a U-bracket wall-mount kit compatible with ARQIS110. Available in white and black finish.

ARQ112UB is a U-bracket wall-mount kit compatible with ARQIS112. Available in white and black finish.

ARQSB10SATB is a kit including 2 metal brackets, to convert an ARQIS SSB10 subwoofer unit into a hanging cluster, combining the ARQIS SB10 unit and 4 x eAMBIT103 satellite loudspeakers (loudspeakers not included with this reference).

SR8 is a wall mount bracket for VERSO8, VERSO8P.

SR12 is a mount bracket for VERSO12P, ARQIS110 and ARQIS112 loudspeakers.

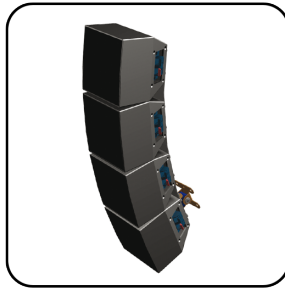
TRIP01 is a 35mm loudspeaker floor stand set (2 units).

POLE01 is an adjustable 35 mm rod for pole for loudspeaker mount on top of a sub-woofer unit (ARQIS110 on top of ARQISSB15, VERSO series on top of VERSO SB115P, etc.).

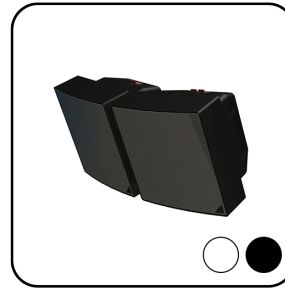
ADP is a cargo restraint double stud and ring for the CKL series.



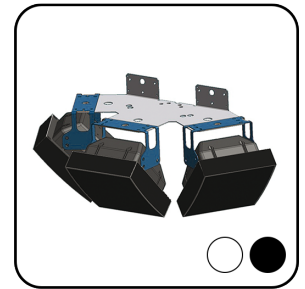
MP103AMB2



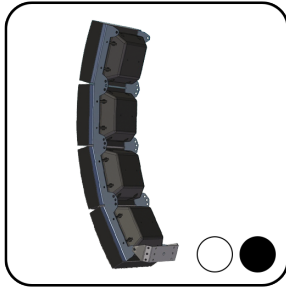
MP103AMB4



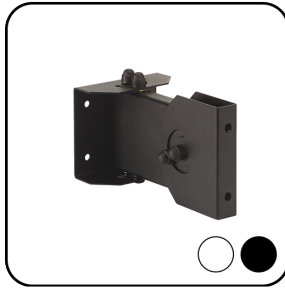
MP106AMB2



MP106AMB3



MP106AMB4



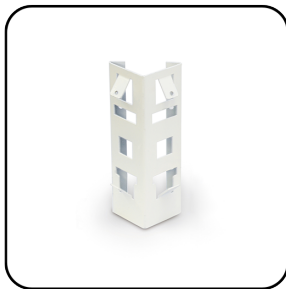
SR6



DSTANDAUEDEO



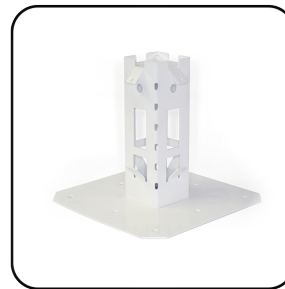
MSTANDAUEDEO



MP106NEST2



MP106NEST3



MP106NEST4

MP103AMB2 is a cluster hardware for 2 eAMBIT103 units.

MP103AMB4 is a cluster hardware for 4 eAMBIT103 units.

MP106AMB2 is a cluster hardware for 2 eAMBIT106 units.

MP106AMB3 is a cluster hardware for 3/6 eAMBIT106 units.

MP106AMB4 is a cluster hardware for 4 eAMBIT106 units.

SR6 is a wall mount bracket for MP106AMB2.

DSTANDAUEDEO is a desktop stand for one AUDEO103 / AUDEO106 loudspeaker.

MSTANDAUEDEO allows to mount an AUDEO loudspeaker on a standard microphone stand.

MP106NEST2 is a 2 NEST106 units wall mount bracket.

MP106NEST3 is a 3 NEST106 units corner mount bracket.

MP106NEST4 is a ceiling bracket for half sphere configurations (4 NEST106 units).