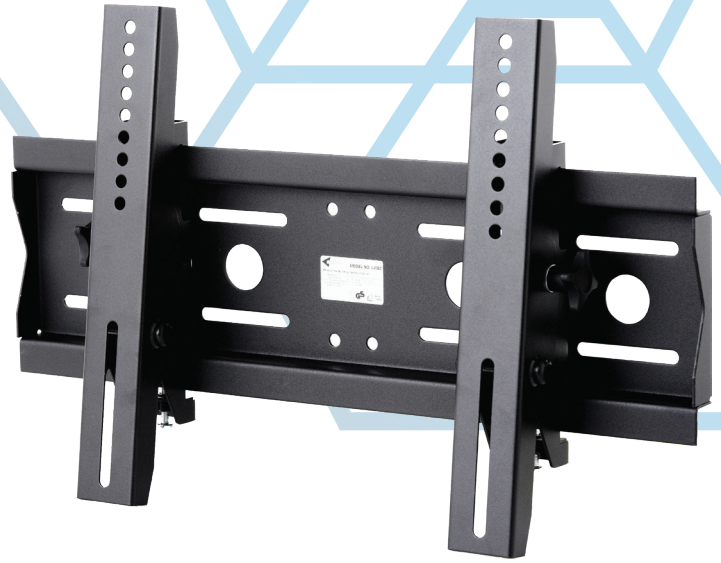


# LWB2

## UNIVERSAL TILT WALL MOUNT

FOR 26"-42" SCREENS

Designed for smaller screens up to 42" and weighing up to 60 kg. With its numerous mounting holes in the support plate, it is possible to mount LWB2 on various types of wall surfaces, both concrete and wooden. Screen protection against falling, robust finish and, at the same time, modern design allow the use of LWB2 in various rooms. Installing the screen on the wall increases the amount of free space in the room, while the ability to tilt the screen by  $-12^{\circ}/+6^{\circ}$  improves the user's viewing comfort.



### FEATURES

- Universal mount for screens of different brands
- Robust and durable, made of powder-coated metal pieces
- The support plate features numerous holes for installation on concrete and wooden surfaces
- Screen tilting from  $-12^{\circ}/+6^{\circ}$
- Screen protection against falling
- Screen mounting hardware included
- Quick and simple installation
- Possibility of lateral shift of the screen when mounted on the wall plate before tightening the lock screws

### PRODUCT SPECIFICATIONS

Short index	LWB2
Category	Tilt Wall Mounts
Product group	Display Mounts
Colour	Black
Warranty	Limited 5-years
Number of screens	1
Minimum screen size	26"
Maximum screen size	42"
Maximum load	60 kg
Forward tilting	$-12^{\circ}/+6^{\circ}$
VESA Mounting Compatibility	100x100 up to 400x300



26"-42"



100x100  
400x300



$-12^{\circ}/+6^{\circ}$



60 kg



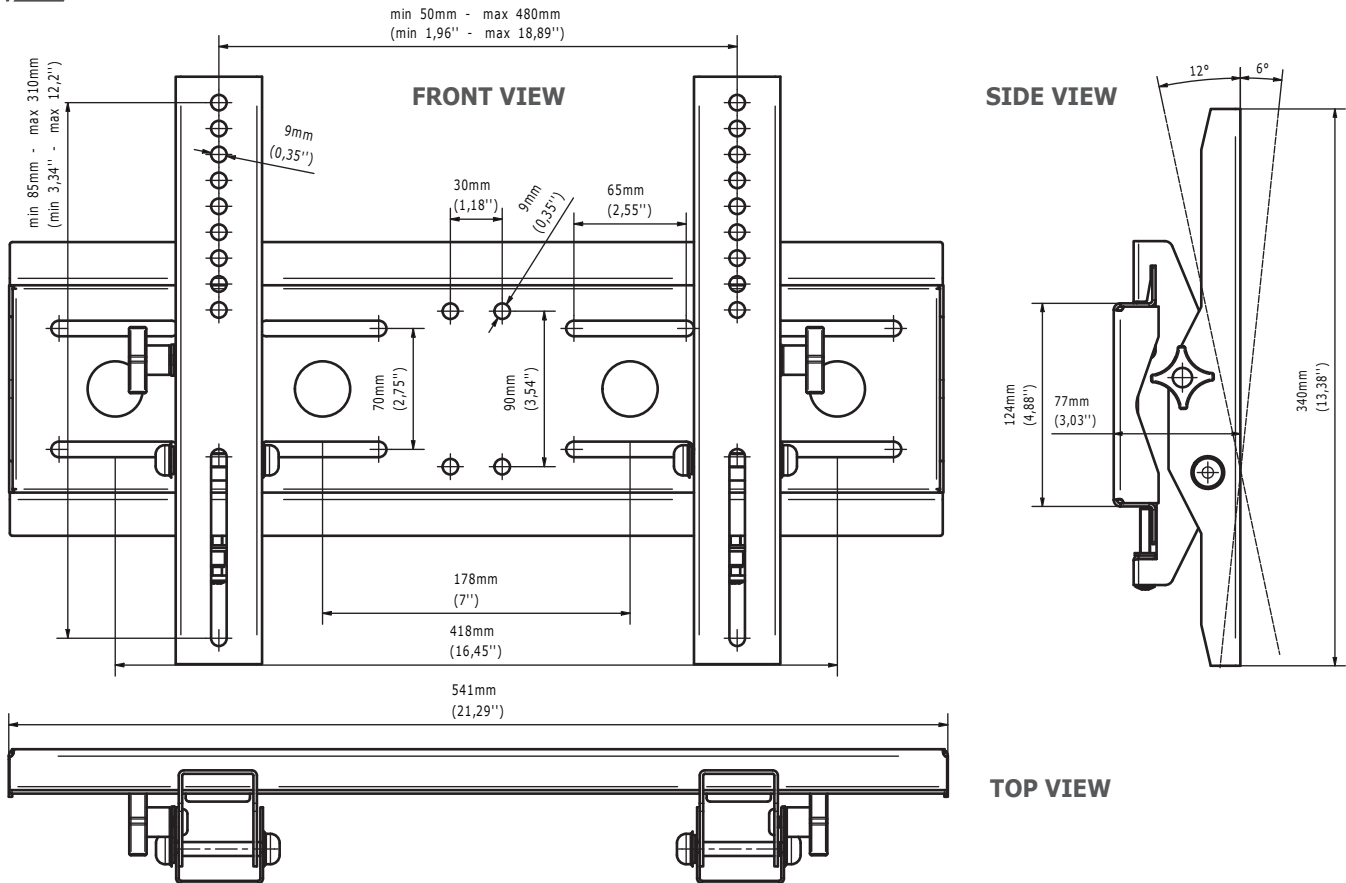
The support plate features numerous holes for installation on concrete and wooden surfaces



Possibility of tilting the screen from  $-12^{\circ}$  to  $+6^{\circ}$



security screws prevent from accidental fall or unauthorised removal of a screen


**TECHNICAL SPECIFICATIONS**

Product dimensions	W: 541 mm D: 77 mm H: 340 mm (W:21,30" D:3,03" H:13,39")
Product weight	3,3 kg (7 lb)
Max. distance from mounting surface	77 mm (3,03")
Min. distance from mounting surface	77 mm (3,03")
Max. mounting pattern	480 mm x 310 mm
Min. mounting pattern	50 mm x 85 mm

**LOGISTICS DATA**

SAP INDEX	EAN CODE	COLOUR	PACKAGE DIMENSIONS	PACKAGE WEIGHT
WUSC-LWB2c-B	5908252960217	BLACK	570 x 180 x 80 mm 22,44 x 7,09 x 3,15"	3,7 kg 8 lb

HS Code (Harmonized System): 732690, HTS Code (Harmonized Tariff Schedule): 7326909890, Country of Origin: Poland

**ACCESSORIES AND RELATED PRODUCTS**


LWB1



LWB3



EWB150



PWB2

2021 - EDBAK Sp. z o.o. All rights reserved.  
The information included in the specifications reflects the current technical specifications at the time of printing. We reserve the right to modify technical or physical specifications without prior notice. EDBAK name and EDBAK logo are registered trademarks of EDBAK Sp. z o.o. All EDBAK images and symbols are sole property of EDBAK Sp. z o.o. Edbak shall not be held liable for any loss or damage caused by incorrect installation or mounting. Copying this specification in whole or in part is only allowed after obtaining written consent from EDBAK Sp. z o.o.  
LWB2c-B-210601-EN