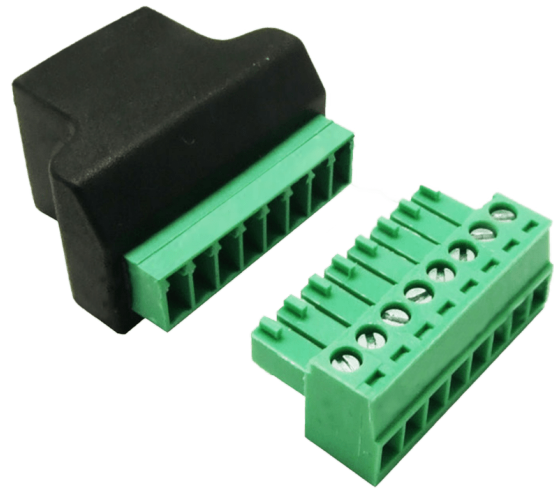




# CTA845

Cable test adapter

The CTA845 cable test adapter features a 8-pin terminal block connector (3.5 mm pitch) on one side and a female RJ45 connector on the other side. Both connectors are parallel connected, allowing twisted pair peripheral expansion cabling being tested with standard RJ45 cable testers. This will avoid wrong wiring causing failure and damage to equipment.



## System specifications:

Connectors	8-pin Euro Terminal Block
	RJ45
	RJ45 (Female)

## Product Features:

Dimensions	38 x 32 x 18 mm (W x H x D)
Weight	0.25 kg

## Variants:

- CTA845MK2 - Cable test adapter