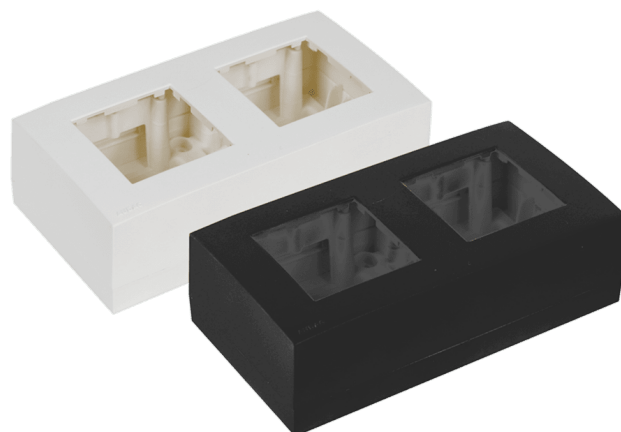




WB45D

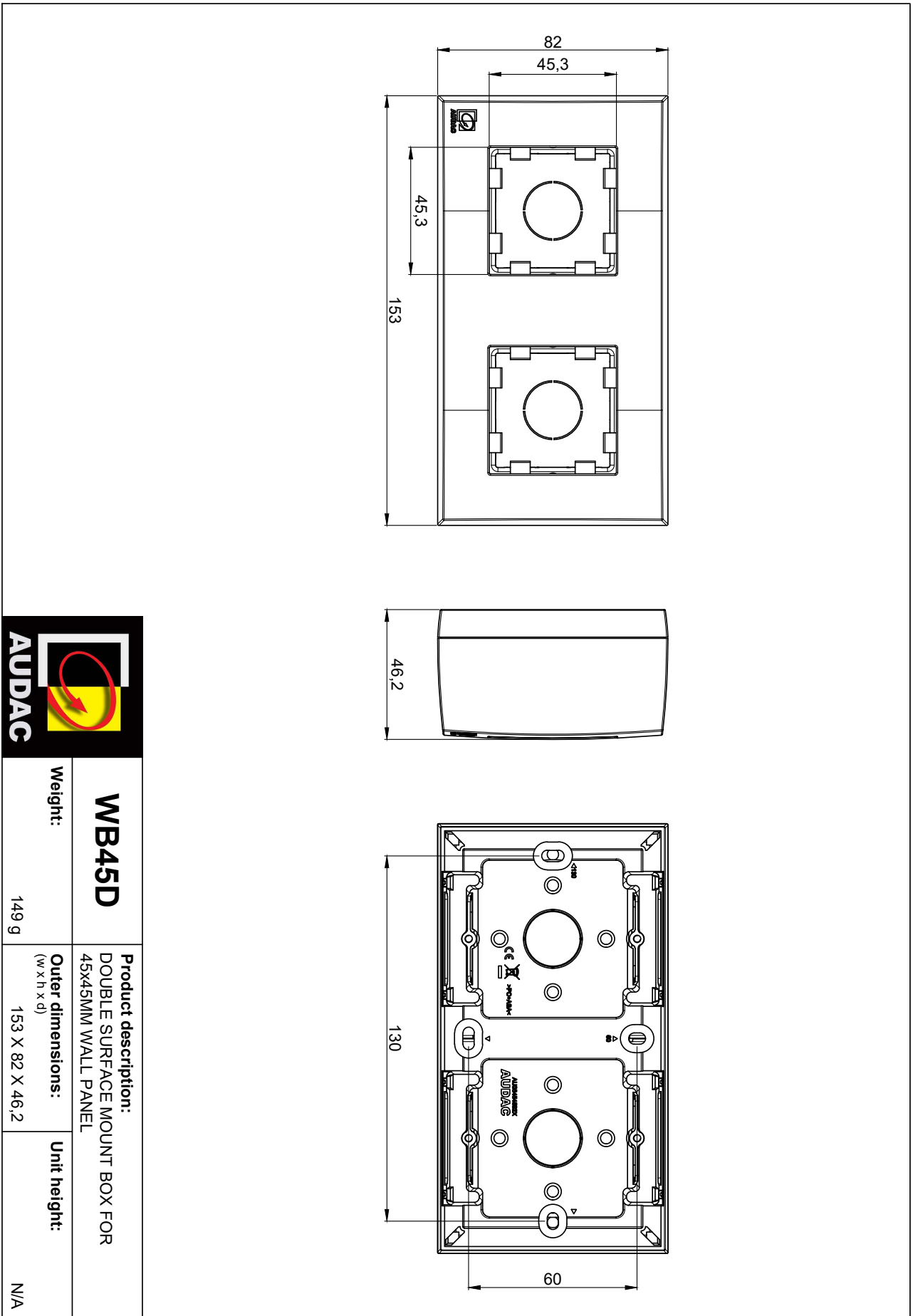
Surface mount box double 45 x 45 mm

The WB45 wall boxes allow surface mount installation for any 45 x 45 mm standard sized product such as matrix control panels, volume controllers, connection plates, ...They come including a metal subframe(s) and are available in single (WB45S) and double (WB45D) unit size. They are available in black (/B) and white (/W)



Variants:

- WB45D/W - White version
- WB45D/B - Black version



<p>WB45D</p>	<p>Product description: DOUBLE SURFACE MOUNT BOX FOR 45x45MM WALL PANEL</p>	<p>Unit height: N/A</p>
<p>Weight: 149 g</p>	<p>Outer dimensions: (w x h x d) 153 X 82 X 46,2</p>	