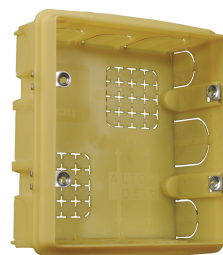


BBI2

Universal BTicino built-in box 2 x 3 modules



The BBI2 is an in-wall back box for the PM1122RL, the analog remote controls of the PM1122 pre-amplifier.

The BBI2 and PM1122RL have been designed to match perfectly with each other.

No more searching for the right accessory – Apart products are available from stock and have been designed to make an installer's life easier!

TECHNICAL SPECIFICATIONS

height in mm	120	width in mm	108
depth in mm	53	material	plastic
Net weight product (kg)	0,05		

[MORE PICTURES](#)

