

COLS101

slimline column speaker for speech
70/100V



COLS101 is an extra slim column speaker that is especially suitable for sound reproduction in acoustically difficult venues.

Advanced technology guarantees optimized sound dispersion and improved speech intelligibility. This decreases microphone feedback in reverberant locations such as houses of worship, sport facilities, public buildings as well as conference facilities and auditoriums.

This speaker offers timeless design combined with impeccable sound reproduction.

The COLS101 has 10 x 2" woofers and 1 x 1" tweeter. A standard wall bracket and installation tools are included.

The COLS101 loudspeakers can be painted in any colour.

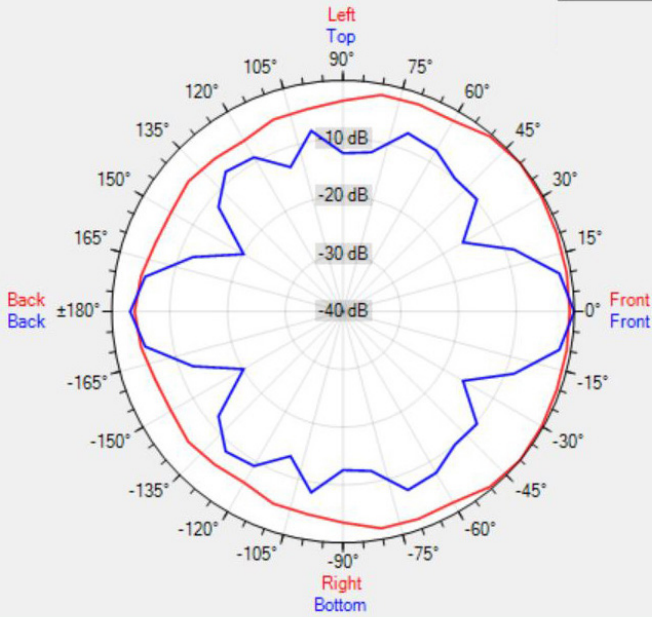
TECHNICAL SPECIFICATIONS

height in mm	721	width in mm	66
depth in mm	66	loudspeaker system	multiple
woofer size in inch	10 x 2	woofer cone material	coated paper
tweeter size in inch	1	mounting system	L-brackets
colour	white	100V transformer power taps in watts	40 - 20 - 10
70V transformer power taps in watts	40 - 20 - 10 - 5	impedance (ohms)	8
low impedance dynamic power in watts	60	low impedance RMS power in watts	30
SPL 1W/1m in dB	91	max SPL 1m in dB	106
frequency response in Hz	200 - 20K	main construction material	aluminium
grille main material	aluminium	IP rating	66
Horizontal dispersion angle 1000 Hz	180°	Vertical dispersion angle 1000 Hz	40°
closest RAL colour (subject to deviations)	RAL9016	Net weight product (kg)	3,10

POLAR PLOTS

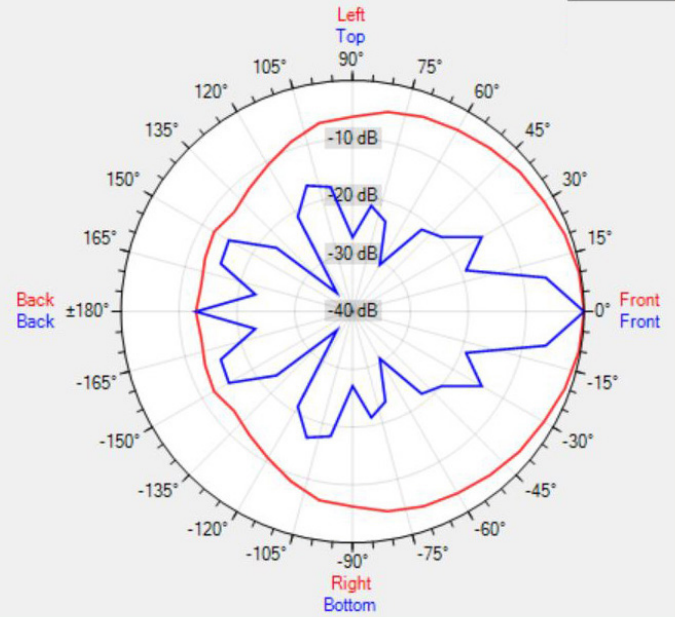
Data Shown: COLS101 (Apart Audio)
 Display Parameters: Frequency: 1000Hz (1/24th Octave)

Horizontal
 Vertical



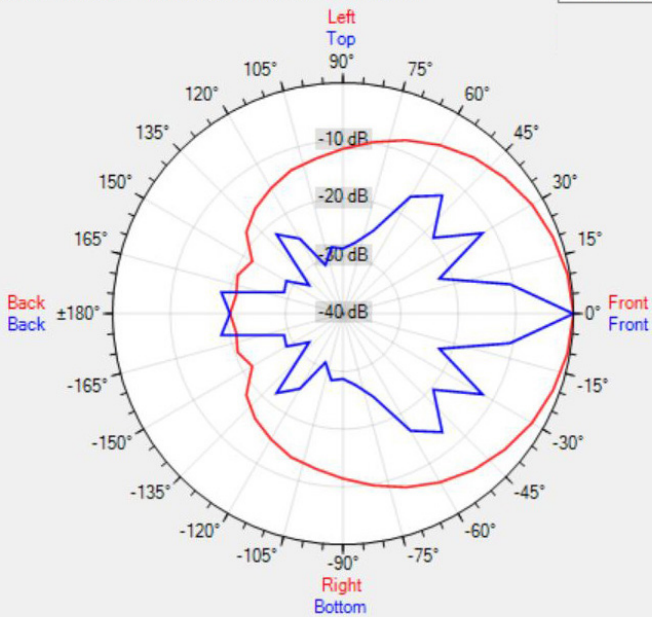
Data Shown: COLS101 (Apart Audio)
 Display Parameters: Frequency: 2000Hz (1/24th Octave)

Horizontal
 Vertical



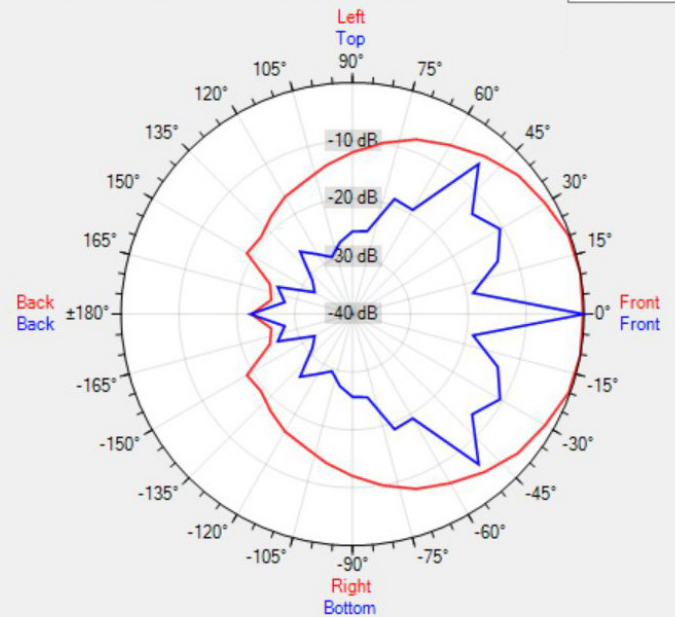
Data Shown: COLS101 (Apart Audio)
 Display Parameters: Frequency: 4000Hz (1/24th Octave)

Horizontal
 Vertical



Data Shown: COLS101 (Apart Audio)
 Display Parameters: Frequency: 8000Hz (1/24th Octave)

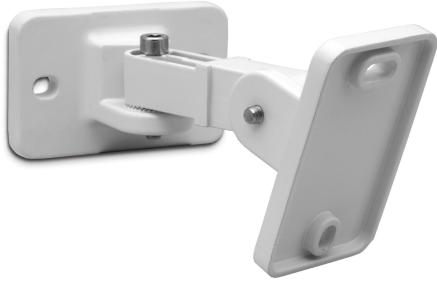
Horizontal
 Vertical



MORE PICTURES



ACCESSORIES



COLSBRA

Bracket for easy tilting and rotating of COLS sound columns